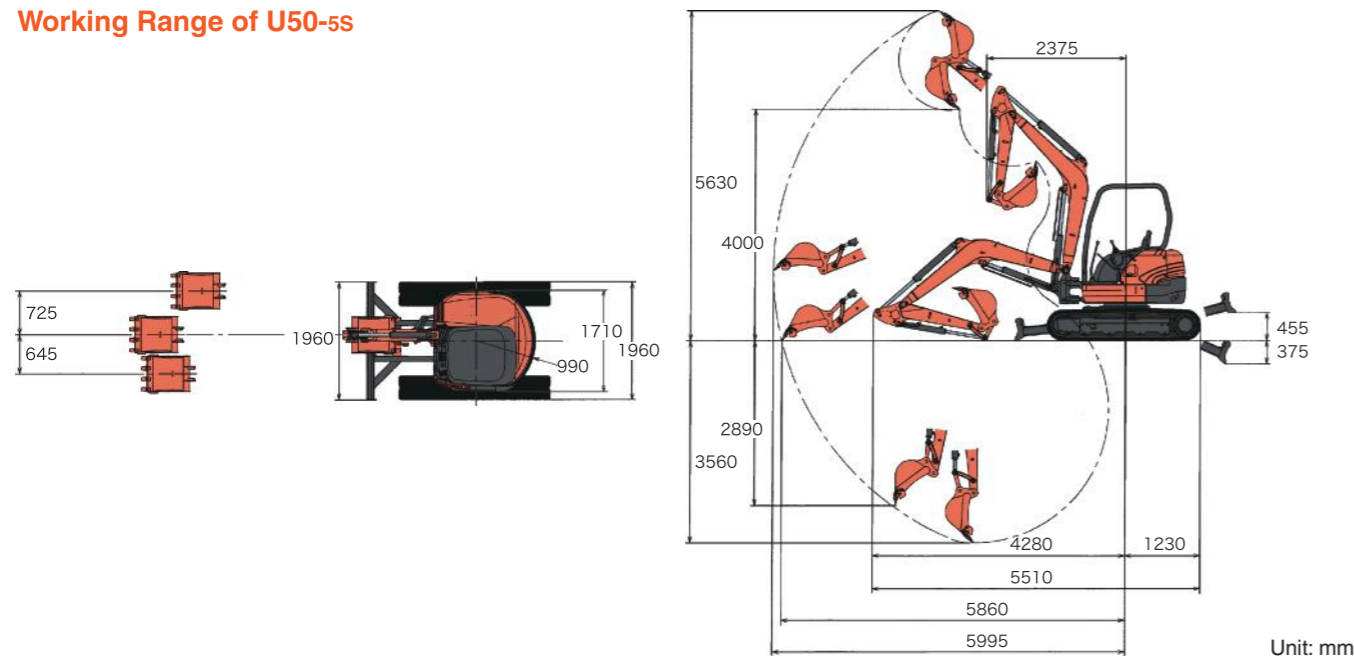


## Specifications

Model		U50-5S	
Bucket capacity	m <sup>3</sup>	0.16	
Std. bucket width: (with/without cutting blade)	mm	650 / 600	
Machine weight	Canopy (rubber/steel crawler)	kg	4705 / 4790
	Cabin (rubber/steel crawler)	kg	4780 / 4865
Operating weight (Including operator weight: 75kg)	Canopy (rubber/steel crawler)	kg	4780 / 4865
	Cabin (rubber/steel crawler)	kg	4855 / 4940
Dimensions (In transport condition)	Overall length	mm	5510
	Overall height	mm	2540
	Overall width	mm	1960
	Min. ground clearance	mm	320
Engine	Model	Canopy	Kubota V2203-M-E3-BH-BR2
		Cabin	Kubota V2203-M-E2-BH-BR1
	Total displacement	cc	2197
	Rated output	Canopy	kW (HP) / rpm
Cabin		kW (HP) / rpm	28.5 (38.2) / 2250
Working range	Max. digging height	mm	5630
	Max. dumping height	mm	4000
	Max. digging depth	mm	3560
	Max. vertical wall digging depth	mm	2890
	Max. digging radius	mm	5995
	Boom swing (left/right)	deg	70 / 50
	Min. turning radius (with swing)	mm	2375 (1875)
	Min. tail turning radius	mm	990
	Max. breakout force (bucket)	kN (kgf)	36.5 (3720)
Track type	Rubber / Steel		
Track width	mm	400	
Travel section	Crawler length	mm	2500
	Tumbler distance	mm	1990
	Travel speed (1st/2nd gear)	km / h	2.5/4.4
	Max. climbing angle	deg	30
Swing speed	rpm	8.6	
Blade	Width	mm	1960
	Height	mm	360
	Max. lift above ground/drop below ground	mm	455 / 375
Hydraulic pump type	Variable pump × 1 + gear pump × 1		
Swivel motor type	Hydraulic piston motor		
Travel motor type	Hydraulic piston motor: 2F		
Fuel tank capacity	L	64	

● Specifications in this catalog are subject to change without prior notice.

## Working Range of U50-5S



## Kubota Agricultural Machinery India Pvt Ltd.

No.94, TVH BELICIAA, TOWER- 1,  
8<sup>th</sup> floor, MRC Nagar, Chennai - 600 028  
Tel : +91 - 44 - 6104 1500 Fax : 044 6104 1600  
Web : www.kubota.co.in, Follow Us : [YouTube](#) [f](#) [i](#)

AKK2138

# U50-5S

For Earth, For Life  
**Kubota**

Kubota Mini Excavator





# Operational Performance

The new powerful and efficient hydraulic system is highly productive, ultra-maneuvrable, environmentally friendly and cost-efficient.

## ● Zero-Tail Swing

Kubota's zero-tail swing always keeps the tail of the mini excavator within track-width when swivelling, enabling operation in tight and confined spaces.



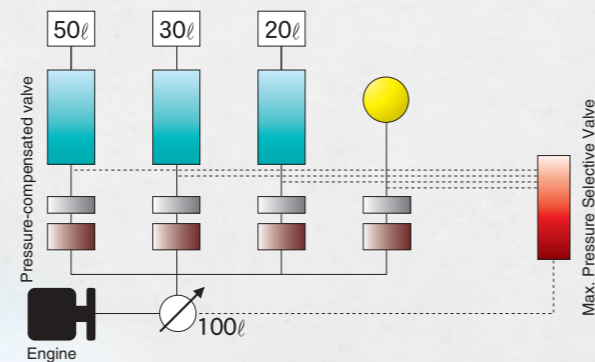
## ● Boom-Swing

Kubota's boom-swing allows direct digging close to a wall or building without repositioning the mini-excavator.



## ● The One Pump Load Sensing System

The system adjusts the hydraulic pressure automatically according to the load changes and reacts precisely to the movement of the control lever. Since the engine load is small, various inching and compounding operations can be undertaken while eliminating unnecessary loss of hydraulic flow.



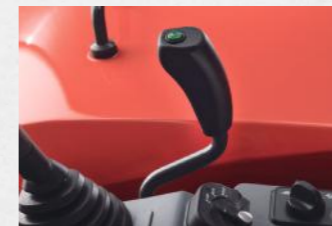
## ● Four simultaneous operations

Bucket, boom, arm and swing can be operated simultaneously and smoothly.



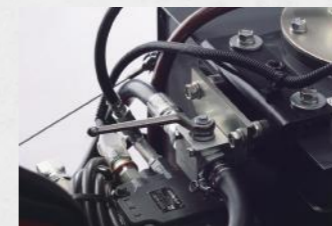
## ● 2-speed travel switch

By placing the 2-speed travel switch on the dozer lever, dozing operations can be done faster and easier.



## ● Third line hydraulic return

When working with one-way hydraulic attachments, such as a breaker, the standard third-line hydraulic return system allows oil to flow directly back to the tank without running through the control valves. This contributes to less oil contamination, reduced back pressure, and greater oil flow efficiency.



## ● Straight Travel

The excavator travels straight even with front attachment operating.

## ● Backup Power Supply

12V electric power socket provides backup power.

## ● Two-pattern selection system

Two pattern operation allows you to easily select the pattern required by the operator.



## ● Travel pedals

The standard travel pedals facilitates ease of tracking.



## ● Auxiliary piping & service ports

Convenient service port at end of boom allows for hydraulic power for attachments such as a breaker.



## ● Jacking Capability

Even when idling, the excavator can be jacked up with the bucket or blade.

## ● H-shaped Track Roller

H-shaped roller increases lateral stability and enhances operator comfort during travel.



# Technology

Advanced functions pooling the essence of Kubota technology.

## ● Clean-running Kubota Engine

Powerful and dependable, U50-5S's diesel engine delivers superior horsepower and performance. It offers low noise and vibration levels, exceptional fuel efficiency.

Rated output (canopy): 38.6 HP

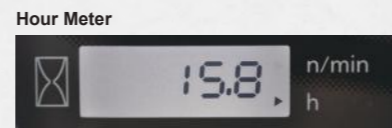
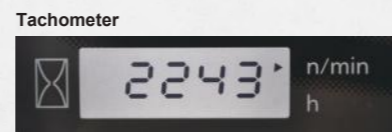
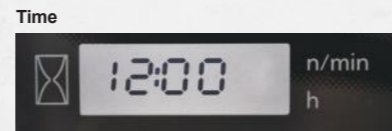


## ● Digital panel

The user-friendly digital panel features one-touch button operation to view the time, hour meter and tachometer. Warning lamps with code numbers on the display will alert you in case of emergencies such as overheating, hydraulic problems or low battery. With easier access, simpler settings, easy-to-read indicators and alerts, you'll always be aware of the excavator's functioning status.

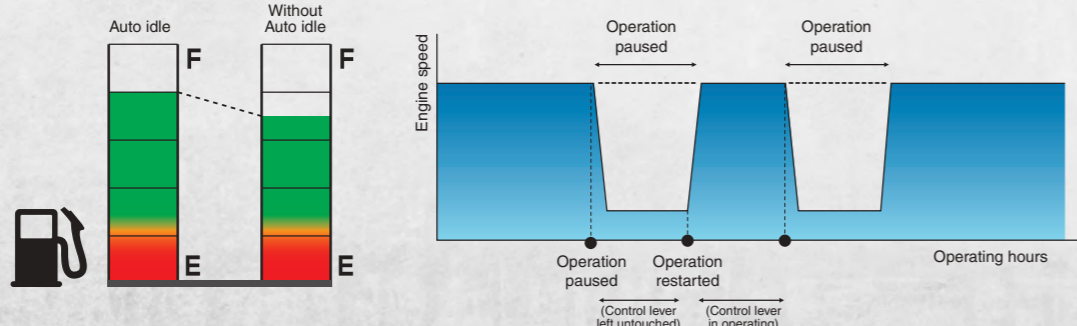


- 1 Fuel Level Gauge
- 2 Water Temperature Gauge
- 3 Warning Lamps (Overheating, Hydraulic, Battery)
- 4 LCD Display (Time, Hour, rpm)



## ● Auto Idling system

Kubota's Auto Idle system helps save up to 10% fuel. When the control levers are in neutral for more than four seconds, the engine idles automatically. Move any control lever and the engine immediately engages. This innovative feature reduces noise, exhaust emissions and running costs.



# Safety & Operator Comfort

Since 1978, when Kubota entered the European and North American markets it was subject to the strictest laws and regulations on safety. Since then we have accumulated all the necessary knowledge and expertise which is now applied to all our latest models providing a reliable, safe and comfortable working environment for operators.

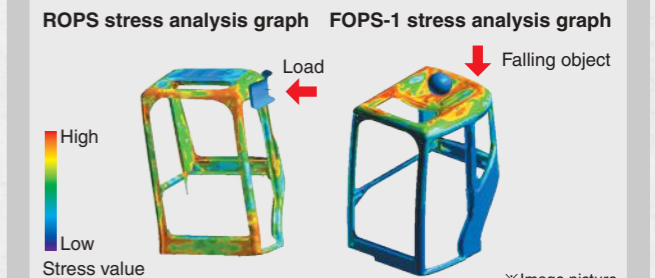
## ● ROPS/FOPS cabin

The world-class ROPS/FOPS cabin (supplied with seat belts) is used for enhanced operator safety.

### Field Test

Stress analysis on ROPS (Roll Over Protective Structure) and FOPS (Falling Object Protective Structure) reveal that the following requirements are met:

- Required energy absorption capability
- Required load carrying capability
- Ensures operator safe zone



## ● Swivel Motor With Disk Break

Swivel lock pin not required during transportation as swivel is locked automatically when engine switches off.

## ● Boom lowering Prevention

Kubota's unique anti-drop valve prevents accidental lowering of boom.

## ● Engine Neutral Start

Engine can be started only when safety lever is in the 'locked' position. When in this locked position, the machine cannot move thus preventing accidents.

## ● Wide and Comfortable Space

The cabin is spacious and offers excellent visibility minimising operator stress and fatigue.





# Easy Maintenance

Kubota has simplified the procedure for routine service and inspection for easy and improved machine maintenance.



## ● Right Side Bonnet

Hydraulic system inspection points are consolidated on the right side for easy access.

## ● Rear Side Bonnet

Engine parts consolidated at rear-end for easy access.

## ● Anti-collision Hood

Hood is located 30 mm inside the rotating part to prevent damage through accidental collision.



## ● Boom Cylinder Protector

The new, steel-plated V-shaped boom cylinder protector prevents damage when loading.



## ● Independent Hydraulic Hoses for Blade

Independent hoses for easier maintenance and replacement.



## ● Water-proof Electrical System

Electrical system completely water-proof.

## ● Fuel Tank Drain Valve

Fuel tank drainage is simple and convenient.



## ● Double Air-filter

Double air-filter structure ensures cleaner intake system.

## ● Built-in Hoses for Attachment

This prevents hose damage during operation.

## ● X-shaped and Slanted Track Frame

Designed to reduce soil accumulation on track frame.

## ● Pilot System with Pipeline Filter

Pilot filter element provided to prevent failures caused by clogged operational circuits.

Kubota  
Genuine Parts  
for maximum  
performance,  
durability and  
safety



# Air-conditioned Cabin

For additional operator comfort the CAB model includes an air conditioned (A/C) environment with ample space and good visibility. The sealed environment provides a safe environment for the operator when working in dusty or noisy environments.

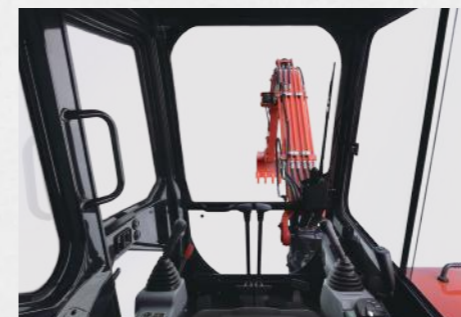
## ● Wide and Comfortable Operator Room

With the comfortable space and A/C, the operator can fully commit themselves to the work at hand. This benefit lowers operator fatigue and enhances productivity in many work environments.



## ● Excellent All Round Visibility

When at work, good visibility is important for operation. The Kubota cabin provides good visibility for maximum efficiency.



## ● Air Conditioner

A/C CAB model provides greater climate control.

